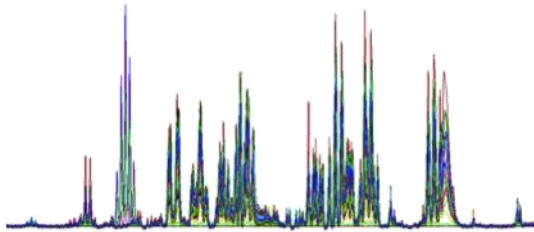


PROGRAM



Sunday 17/4		Fundamentals	Speaker	Institution
8:30	9:15	Registration		
9:15	9:30	Introduction And Overview	G. Theodoridis	Aristotle Univ.
9:30	10:05	The Path From Profile To Mechanistic Understanding	I.D. Wilson	Imperial College
10:05	10:35	Endogenous Metabolic Personalized Theranostics	T. Lundstedt	Upsala Univ.
10:35	11:00	TBC (Exposome)	D. Sarigiannis	Aristotle Univ.
11:00	11:30	Break		
11:30	12:00	Metabolomics Data	O. M. Kvalheim	Oslo Univ.
12:00	12:30	Automatic Compound Identification, Or How To Link Hram QTOF Plant Metabolomics Data To Biology	A. Barsch	Bruker, Germany
12:30	13:00	A Novel Lipid Screening Platform Allowing A Complete Solution	D. Merkel	Sciex Europe
13:00	14:30	Lunch/ Poster		
14:30	15:00	The Importance Of Human Volatilome	A. Agapiou	Univ. Cyprus
15:00	15:10	Intro To Seminars	G. Theodoridis	Aristotle Univ.
15:10	16:15	Seminar 1 Metabolite Identification	M. Witting	Helmholtz Inst. Munich
16:15	16:35	Break		
16:35	17:45	Seminar 2 Data Treatment XCMS And Commercial Software	P. Francheschi	FEM IASMA
17:45	18:00	Closure Wrap-Up		

Monday 18/4		Life Sciences	Speaker	Institution	Tuesday 19/4		Plant/Food/Nutrition	Speaker	Institution
9:00	9:30	Exercise Metabolomics	V. Mougios	Aristotle Univ.	9:00	9:35	Introduction Plant/Food/Natural Products Characterisation	M. Mikros	Athens Univ.
9:30	10:00	Metabolomics As Part Of An Integrated Approach For The Identification Of Predictive Markers Of Type 2 Diabetes	B. Comte	INRA, France	9:35	10:10	Fingerprinting The Salinity Effect On Large-Scale Hydroponic Tomato Cultures Using Integrated GC- And LC-MS Metabolomics	M. Klapa	FORTH Patras
10:00	10:30	Utilising An IMS-DIA-MS Workflow To Characterise And Quantify The Lipidome Of A Patient Cohort Clinically Diagnosed With	I. Edwards	Waters Uk	10:10	10:35	Metabolomics In Systems Biology, Integrating Multiomics Data	K. Aliferis	Athens Agricult. Univ.
10:30	11:00	Metabo-Auto, A Novel Platform For Automated Metabolomic GC-MS Profiling	P. Simek	Biology Centre, Česká Budějovice	10:35	11:00	NMR For Food Geographical Orgin-Authenticity	A. Spyros	Crete Univ.
11:00	11:30	Break			11:00	11:30	Break		
11:30	12:00	Feature Selection Methods For Early Predictive Biomarker Discovery Using Untargeted Metabolomic Data	E. Pujos-Guillot	INRA, France	11:30	11:45	Introduction To Users Needs/Nutritopn Biochemistry	S. Kalogiannis	ATEI Thes/niki
12:00	12:30	Mitochondria And Brain Disorders: A Systems Biology Approach	M. Filiou	Max Planck Munich, Germany	11:45	12:05	Recent Developments In Food Screening By NMR	C. Napoli	Bruker, Italy
12:30	13:00	Pharmacometabolomics-Guided Pharmacogenomics In Precision Medicine	T. Katsila	Univ. Patras	12:05	12:25	Fatty Acid Composition Of Rose, Blackberry And Redberry Fruits Growing In Belarus	M. M. Özcan	Turkey
13:00	14:30	Lunch/ Poster			12:25	12:45	LC-MS Metabolomics Shows A Smart Way To Reduce Sulfites In Wine	P. Arapitsas	FEM IASMA
14:30	14:45	St1: Embryometabolomics	C. Virgiliou	Aristotle Univ.	12:45	13:00	Advanced Metabolomics Study Of Fungal Metabolism And Its Regulation	I. Kalambokis	Athens Agricultural Univ.
14:45	15:00	St2: Ageing And Exercise Of Rat	O. Deda	Aristotle Univ.	13:00	14:30	Lunch/ Poster		
15:00	15:15	St3: Neonatal Sepsis Biomarker Discovery	A.C. Chatziioannou	Aristotle Univ.	14:30	15:45	Seminar 5 Protocol For NMR Based Metabolomics. Tips And Tricks	D. Benaki /A. Pechlivanis	Athens Univ./Imperial College
15:15	16:15	Seminar 3 Targeted Metabolomics LC-MS/MS	F. Michopoulos C.Virgiliou	Astrazeneca Uk/ Aristotle Univ.	15:45	16:15	Break		
16:15	16:35	Break			16:15	17:30	Seminar 6 GC-MS Metabolomics: Best Practice For Data Acquisition, Normalization And Analysis	G. Toulakou, C. Magka	FORTH Patras
16:35	17:40	Seminar 4 Untargeted Metabolomics/ Profiling Semi Targeted LC-MS	P. Vorkas A. Pechlivanis	Imperial College London	17:30	17:45	Closure Wrap-Up		
17:40	17:55	Closure Wrap-Up							